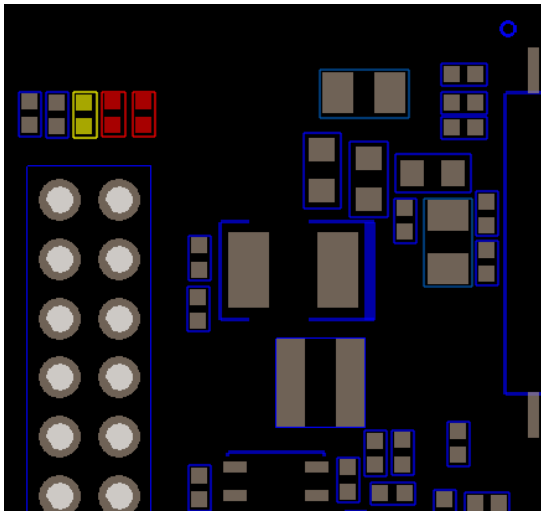


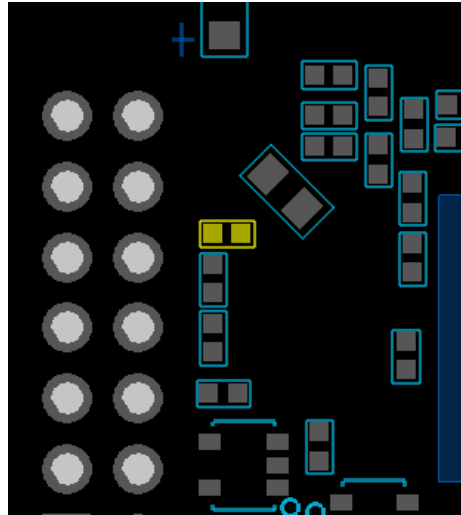
HF-A11 PHY-PHY Application

For PHY-PHY connection, need do the following hardware modification on HF-A11. (High-Flying will support modified module for mass production stage)

1. Add the 0 ohm resistor in red color position
2. Remove the component in yellow color position.
3. AT+FEPHY=on //Enable Ethernet Function
4. AT+FEPTP=on //Enable Ethernet PHY-PHY connection.
5. AT+Z



BOT Layer



TOP Layer

1. The TX/RX data line should be cross coupling. The customer PHY(TX+,TX-,RX+,RX-) should be pulled up to VCC_PHY.
2. The PHYchip should set to 100M work mode.